



## UNIT 1

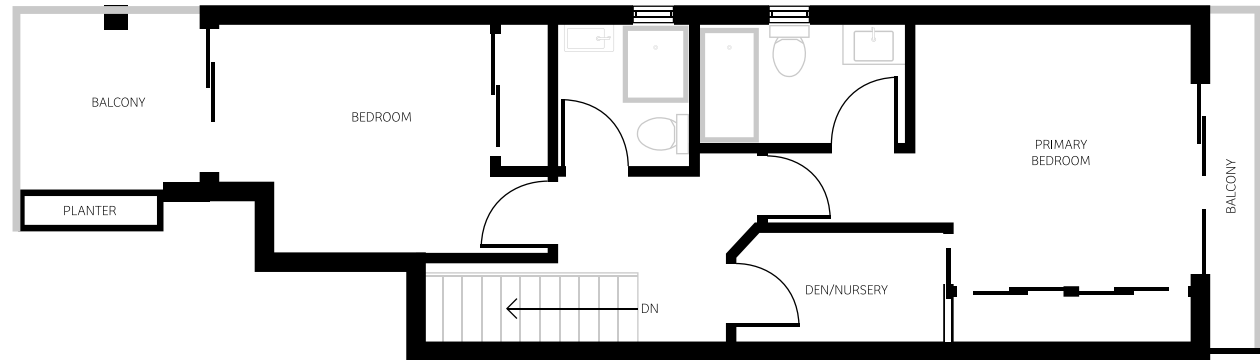
2 BEDROOM  
+ DEN PLUS RENTAL UNIT

**1,293 FT<sup>2</sup>**  
INTERIOR SPACE

**269 FT<sup>2</sup>**  
BALCONY/PORCH



**MAIN | 727 ft<sup>2</sup> (INCLUDING LOCK OFF @ 233ft<sup>2</sup>)**

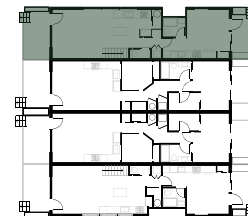


**UPPER | 566 ft<sup>2</sup>**

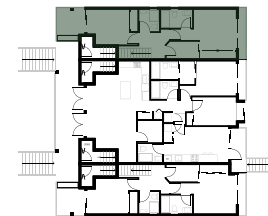
In our continuing effort to improve and maintain the high standard of Coronation Place, the developer reserves the right to modify or change plans, square footage, specifications, features and prices without notice.

All dimensions and sizes are approximate and are based on architectural measurements.

NOT FOR CONSTRUCTION



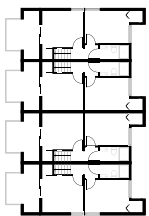
GROUND



FIRST



SECOND



THIRD



## UNIT 2

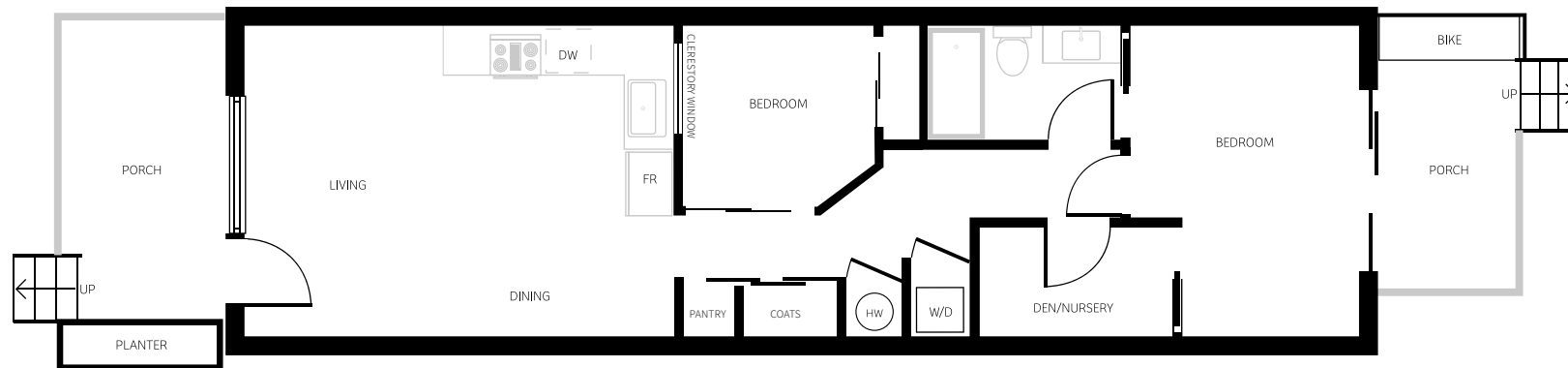
2 BEDROOM  
+ DEN

**732 FT<sup>2</sup>**

INTERIOR SPACE

**153 FT<sup>2</sup>**

BALCONY/PORCH

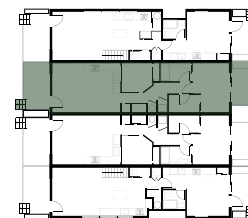


MAIN | 732 ft<sup>2</sup>

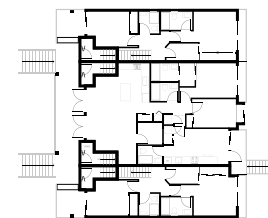
In our continuing effort to improve and maintain the high standard of Coronation Place, the developer reserves the right to modify or change plans, square footage, specifications, features and prices without notice.

All dimensions and sizes are approximate and are based on architectural measurements.

NOT FOR CONSTRUCTION



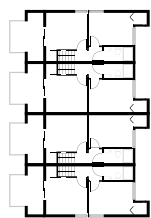
GROUND



FIRST



SECOND



THIRD



## UNIT 3

2 BEDROOM  
+ DEN

**732 FT<sup>2</sup>**  
INTERIOR SPACE

**153 FT<sup>2</sup>**  
BALCONY/PORCH

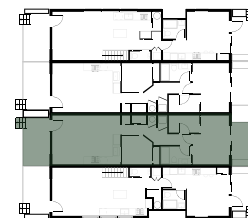


**MAIN | 732 ft<sup>2</sup>**

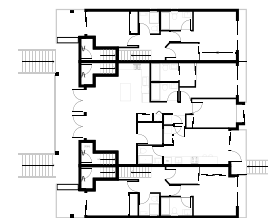
In our continuing effort to improve and maintain the high standard of Coronation Place, the developer reserves the right to modify or change plans, square footage, specifications, features and prices without notice.

All dimensions and sizes are approximate and are based on architectural measurements.

NOT FOR CONSTRUCTION



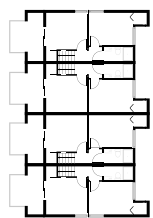
GROUND



FIRST



SECOND



THIRD



## UNIT 4

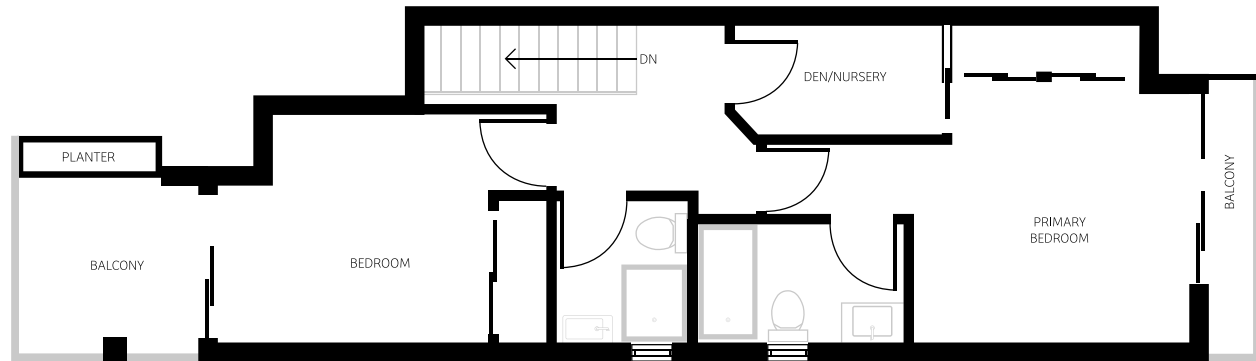
2 BEDROOM  
+ DEN PLUS RENTAL UNIT

**1,277 FT<sup>2</sup>**  
INTERIOR SPACE

**269 FT<sup>2</sup>**  
BALCONY/PORCH



**MAIN | 715 ft<sup>2</sup> (INCLUDING LOCK OFF @ 233ft<sup>2</sup>)**

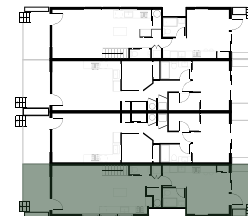


**UPPER | 560 ft<sup>2</sup>**

In our continuing effort to improve and maintain the high standard of Coronation Place, the developer reserves the right to modify or change plans, square footage, specifications, features and prices without notice.

All dimensions and sizes are approximate and are based on architectural measurements.

NOT FOR CONSTRUCTION



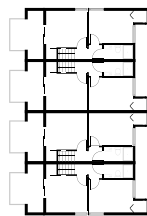
GROUND



FIRST



SECOND



THIRD

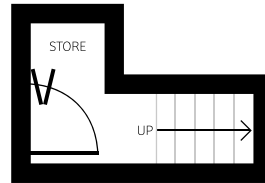


## UNIT 5

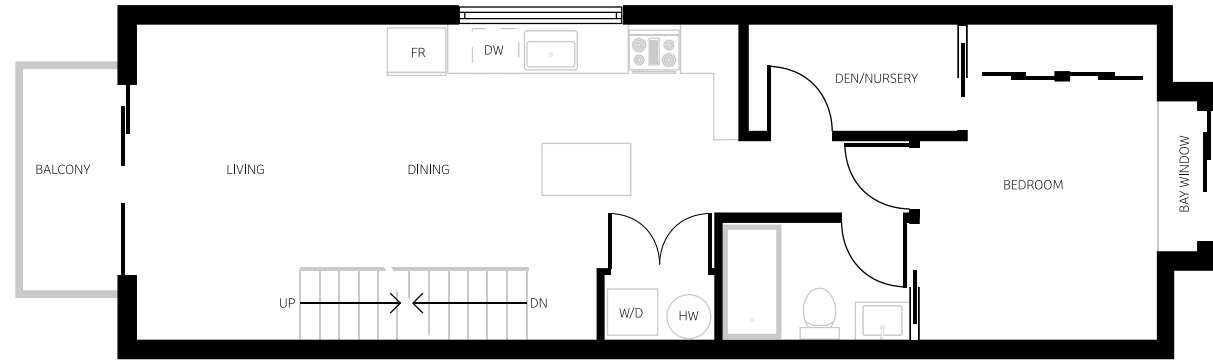
3 BEDROOM  
+ DEN

**1,111 FT<sup>2</sup>**  
INTERIOR SPACE

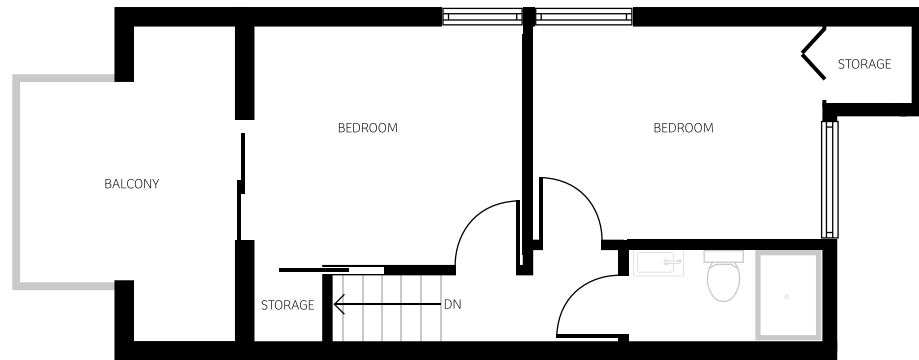
**116 FT<sup>2</sup>**  
BALCONY  
+PRIVATE YARD



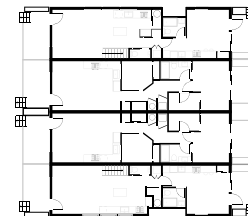
**ENTRANCE/GROUND | 75 ft<sup>2</sup>**



**MAIN | 660 ft<sup>2</sup>**



**UPPER | 376 ft<sup>2</sup>**



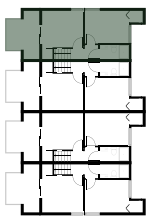
GROUND



FIRST



SECOND



THIRD

In our continuing effort to improve and maintain the high standard of Coronation Place, the developer reserves the right to modify or change plans, square footage, specifications, features and prices without notice.

All dimensions and sizes are approximate and are based on architectural measurements.

NOT FOR CONSTRUCTION

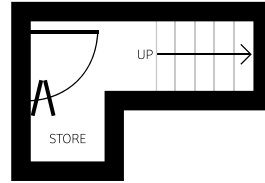


## UNIT 6

3 BEDROOM  
+ DEN

**1,111 FT<sup>2</sup>**  
INTERIOR SPACE

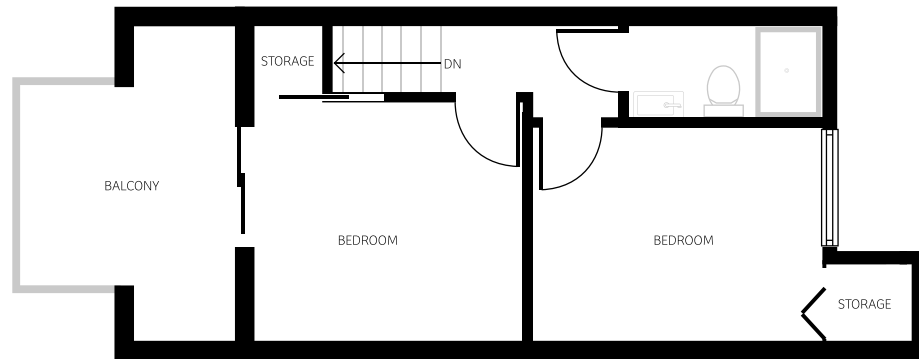
**116 FT<sup>2</sup>**  
BALCONY  
+PRIVATE YARD



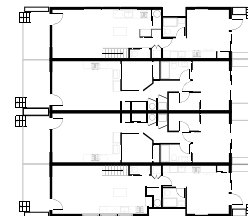
**ENTRANCE/GROUND | 75 ft<sup>2</sup>**



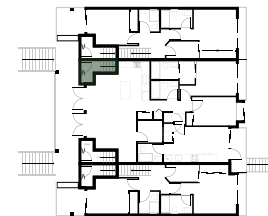
**MAIN | 660 ft<sup>2</sup>**



**UPPER | 376 ft<sup>2</sup>**



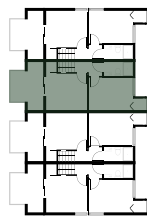
GROUND



FIRST



SECOND



THIRD

In our continuing effort to improve and maintain the high standard of Coronation Place, the developer reserves the right to modify or change plans, square footage, specifications, features and prices without notice.

All dimensions and sizes are approximate and are based on architectural measurements.

NOT FOR CONSTRUCTION

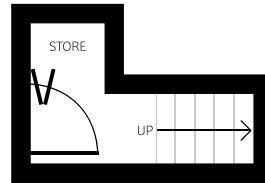


## UNIT 7

3 BEDROOM  
+ DEN

**1,111 FT<sup>2</sup>**  
INTERIOR SPACE

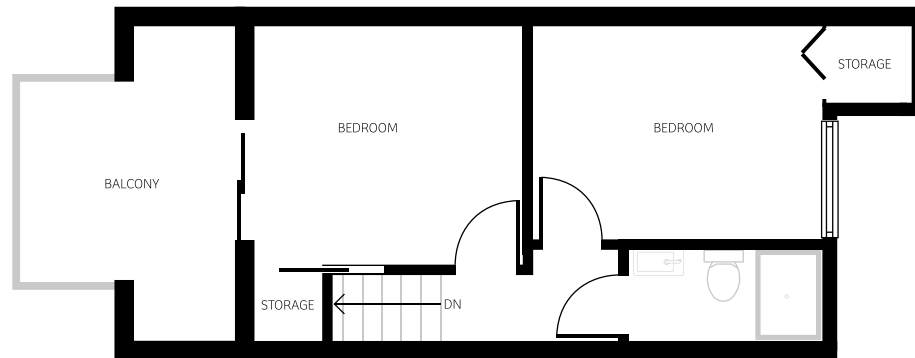
**116 FT<sup>2</sup>**  
BALCONY  
+PRIVATE YARD



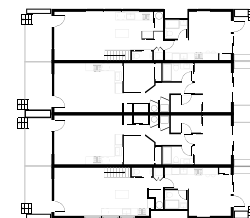
**ENTRANCE/GROUND | 75 ft<sup>2</sup>**



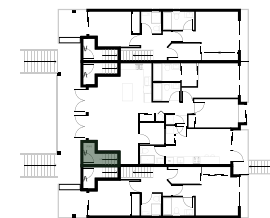
**MAIN | 660 ft<sup>2</sup>**



**UPPER | 376 ft<sup>2</sup>**



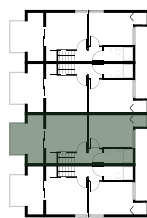
GROUND



FIRST



SECOND



THIRD

In our continuing effort to improve and maintain the high standard of Coronation Place, the developer reserves the right to modify or change plans, square footage, specifications, features and prices without notice.

All dimensions and sizes are approximate and are based on architectural measurements.

NOT FOR CONSTRUCTION

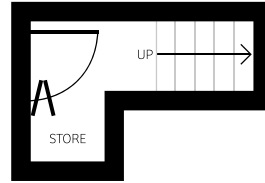


## UNIT 8

3 BEDROOM  
+ DEN

**1,111 FT<sup>2</sup>**  
INTERIOR SPACE

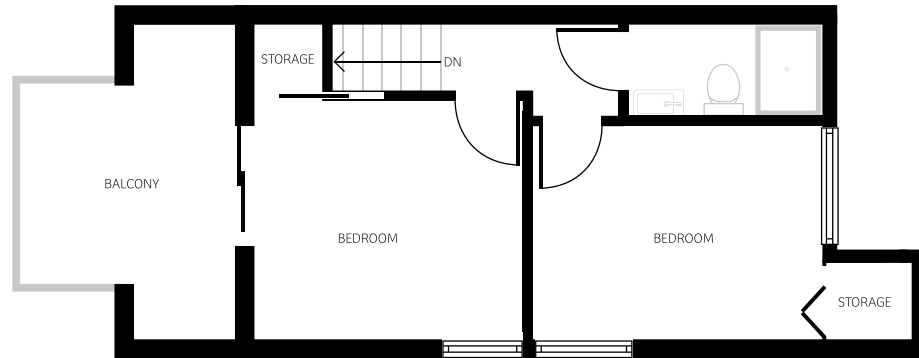
**116 FT<sup>2</sup>**  
BALCONY  
+PRIVATE YARD



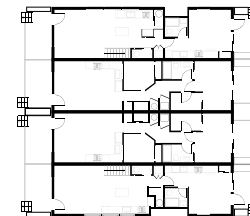
**ENTRANCE/GROUND | 75 ft<sup>2</sup>**



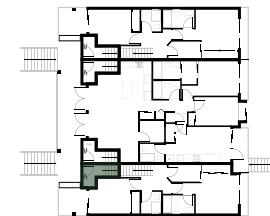
**MAIN | 660 ft<sup>2</sup>**



**UPPER | 376 ft<sup>2</sup>**



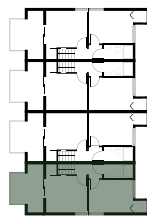
GROUND



FIRST



SECOND



THIRD

In our continuing effort to improve and maintain the high standard of Coronation Place, the developer reserves the right to modify or change plans, square footage, specifications, features and prices without notice.

All dimensions and sizes are approximate and are based on architectural measurements.

NOT FOR CONSTRUCTION

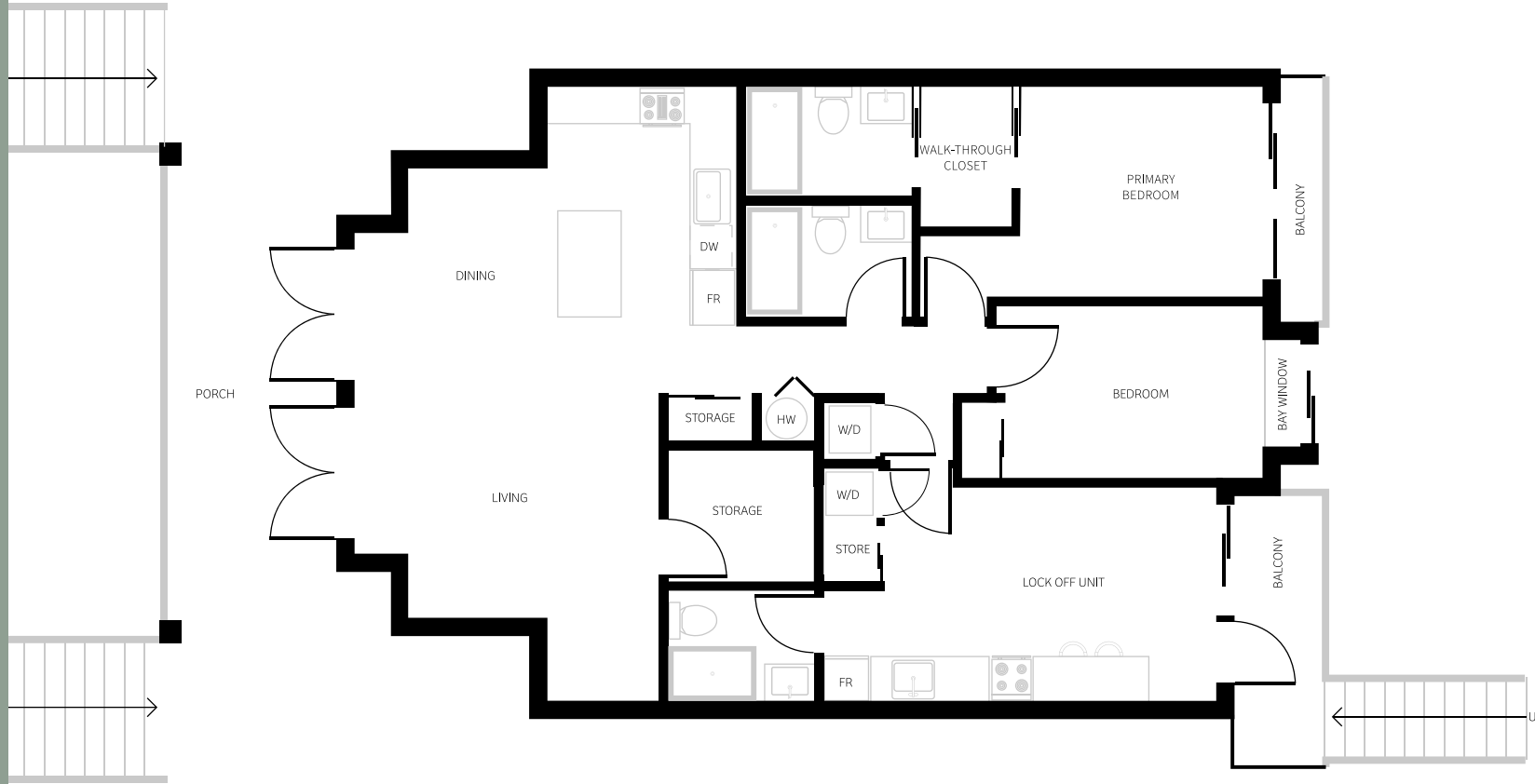


## UNIT 9

2 BEDROOM  
+ DEN PLUS RENTAL UNIT

**1,090 FT<sup>2</sup>**  
INTERIOR SPACE

**196 FT<sup>2</sup>**  
BALCONY/PORCH  
+PRIVATE YARD

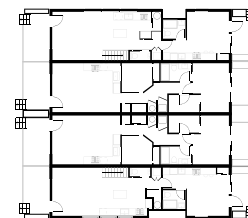


**MAIN** | 1,090 ft<sup>2</sup> (INCLUDING LOCK OFF @ 230ft<sup>2</sup>)

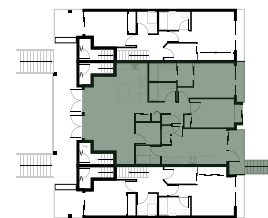
In our continuing effort to improve and maintain the high standard of Coronation Place, the developer reserves the right to modify or change plans, square footage, specifications, features and prices without notice.

All dimensions and sizes are approximate and are based on architectural measurements.

NOT FOR CONSTRUCTION



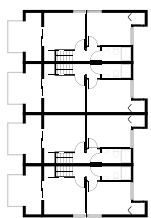
GROUND



FIRST



SECOND



THIRD